

# FALLING

for New Designs

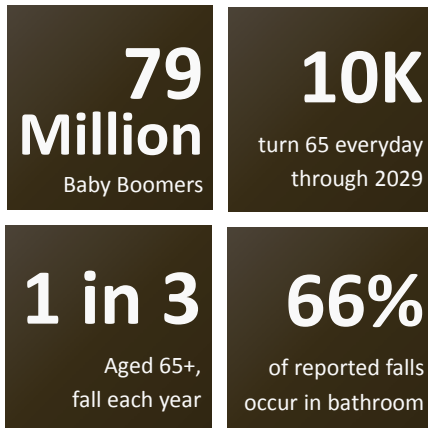


**RICK MILLARD**  
Director Accessible Products  
Business Development

**MILLIE O. SCOTT**  
VP of Sales  
Builder Specification Group

**MATT LAWRENCE**  
Director of Business  
Development  
Builder Specification Group

**ALLEN GERON**  
Director of Business  
Development  
Builder Specification Group

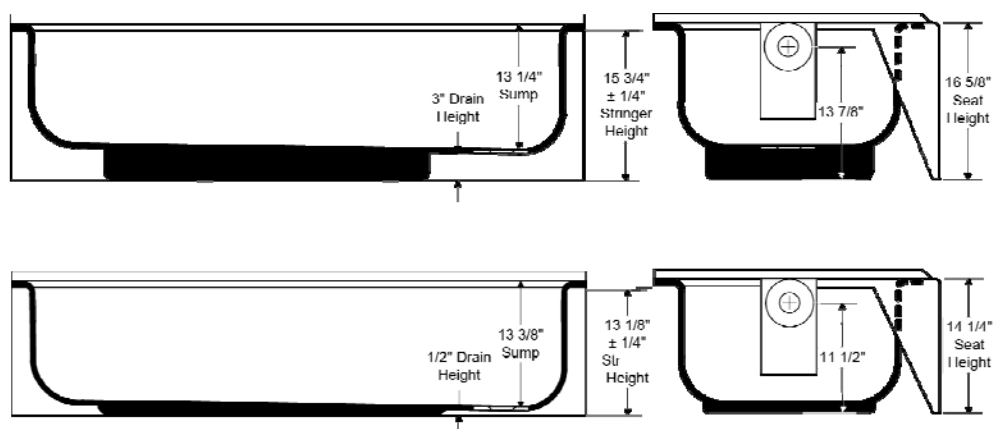



*According to the CDC-  
The bathroom is  
statistically the most  
dangerous room in the  
house.*



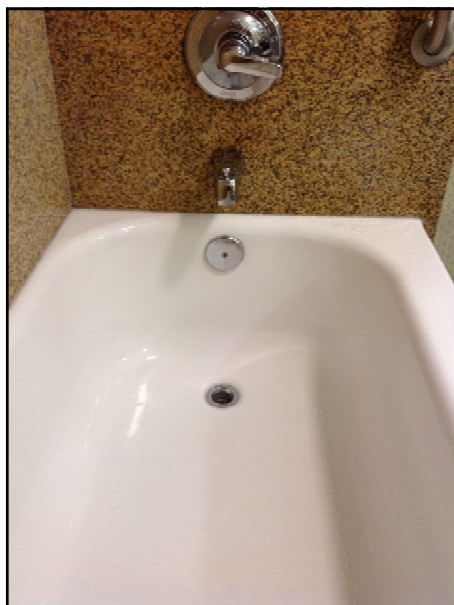


**1** Above The Floor  
Rough

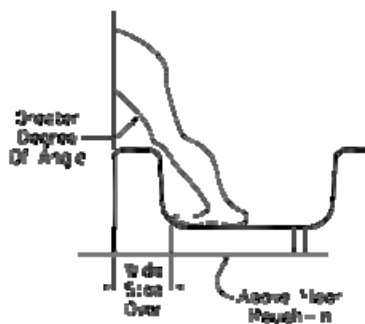


 Change of level while stepping out of the tub with wet feet.





## 2 Bathing Well Design – Slope



### WALL

Slopes are harder to notice and often not anticipated by the bather until a near slip or fall.

### FLOOR

Bather balance while showering



### 3 Smooth Bottoms



Loose the slip resistance.



### 4 Contoured Shower Walls



Not designed to receive future weight bearing accessories

Limit placement of structural backing





## 5 Dam Heights & Width



Traversing the wide span between bathroom floor and the tub well make entry and exiting challenging.



## 5 Dam Heights & Width



## 6 Seats

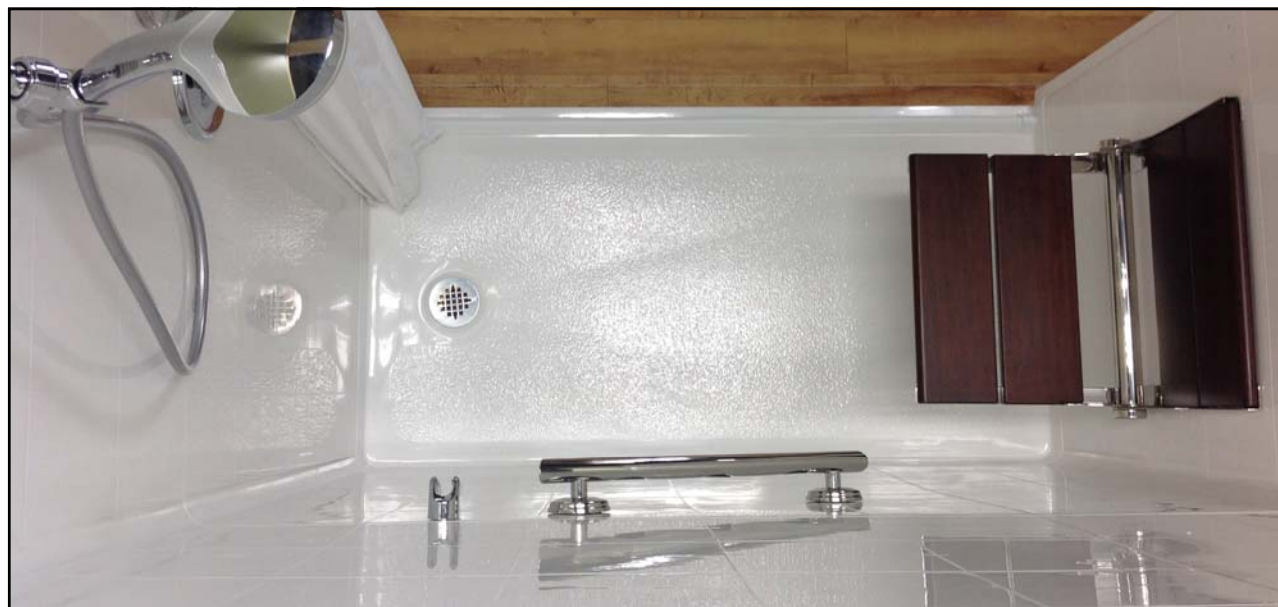


Spacing, size and height limit mobility and restrict movement

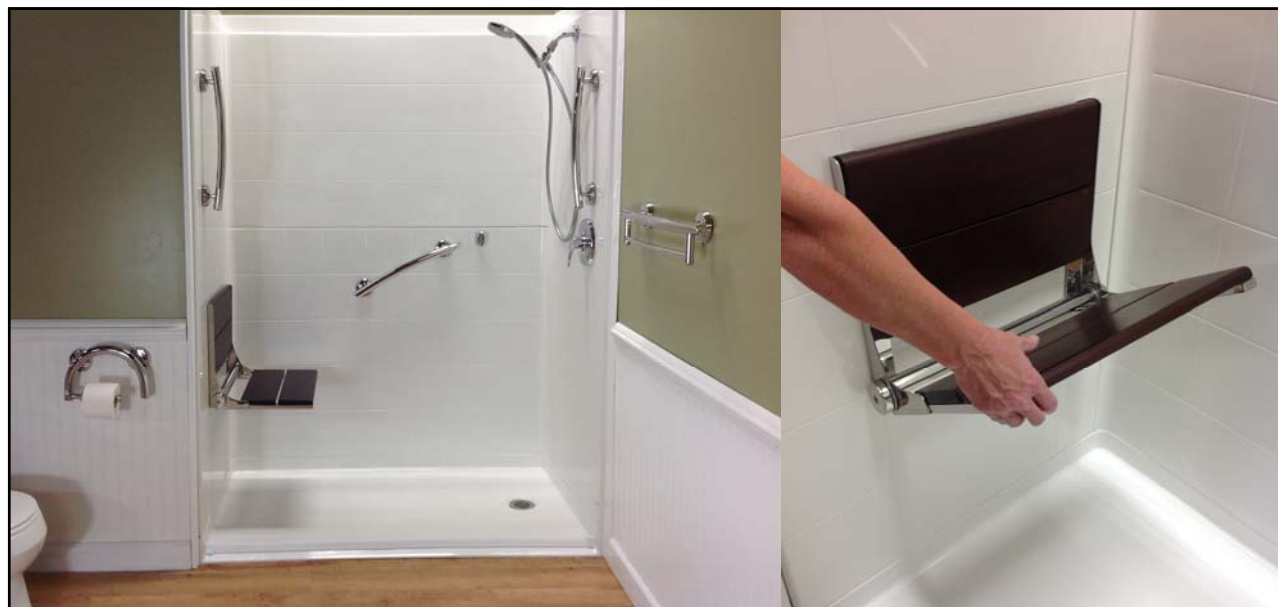


## 6 Seats





6 Seats



6 Seats



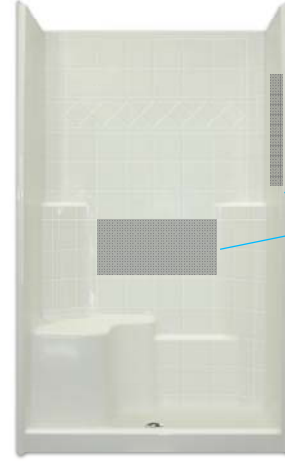




## SENIOR LIVING SHOWERS

Bathe with Confidence

Customizable to the consumers' safety needs



Backing for future bar placement



## SENIOR LIVING SHOWERS

Bathe with Confidence

- 1 Reinforced Walls**  
*High strength non-flexing flat wall construction features integral wood backing to attach future weight bearing accessories where and when you need them.*
- 2 Wall Design**  
*Allows controls to easily be within reach.*
- 3 Leg Ledge**  
*Provides easy, convenient reach for bathing.*
- 4 Comfort Height Seat**  
*A spacious seat at the perfect height.*
- 5 Textured Floors**  
*Flat, textured slip resistant floor instills confidence while entering and exiting.*
- 6 Low Thresholds**  
*Low thresholds, minimum level change, allow for safe, confident entry and exit. Both barrier free and low, step-over thresholds are available.*



